

SIEMENS

HELX
EVOLUTION
WITH TOUCH CONTROL

ACUSON S3000
ULTRASOUND SYSTEM
Hello!
HELX
EVOLUTION
WITH TOUCH CONTROL

HELX
Evolution
with Touch
Control

siemens.com/touch

Extraordinary Technology

ACUSON S3000 Ultrasound System,
HELX Evolution with Touch Control



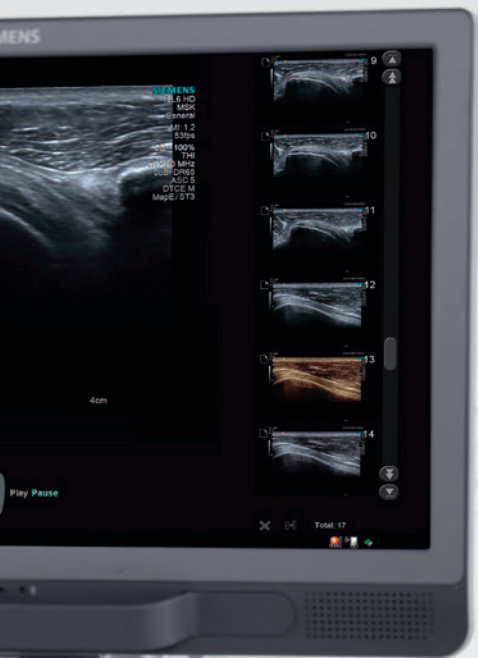
Ultrasound – Designed by You.

If you could design your own ultrasound system, what would you do? We conducted over 170 usability sessions and spoke with 395 healthcare professionals* from around the world to find out what they wanted in an ultrasound system.

Their most common request: An intuitive and smart ultrasound system that enables healthcare providers to effectively manage today's demanding caseloads and diversity of clinical choices.

The ACUSON S3000™ ultrasound system, HELX™ Evolution with Touch Control was designed with a dedicated focus on General Imaging and Interventional Radiology. It offers new levels of workflow efficiency, imaging performance and sustainability.

* Data on file.







Workflow

Increase process efficiency and patient throughput with intuitive workflow innovations



Imaging Performance

Strengthen clinical capabilities with enhanced imaging technologies that advance diagnostic clarity



Sustainability

Investment protection with an upgradeable ultrasound architecture that addresses evolving needs



Workflow

Efficient Workflow – Designed for You.

Increase your process efficiency and patient throughput with intuitive workflow innovations offered by the ACUSON S3000 system, HELX Evolution with Touch Control.

Powered by an intuitive, user-centric interface, the system promotes streamlined exam flows to improve exam quality with less effort. Its new usability concept helps to eliminate unnecessary keystrokes and repetitive hand movements providing a whole new level of user performance.

Intuitive Touch Display

- 12.1-inch (30.7 cm) high-resolution display with Instant Response technology allows for precise key selections
- Tab folder browsing improves operation and learning speed time by eliminating hidden menus and swipe searching

Simplified Control Panel

- Fewer keys and a simplified home-base control structure help to optimize exam workflows and reduce training time
- Laser-optical trackball promotes sensitivity and accuracy in measurements and helps reduce repetitive stress injuries
- Digital and tactile keyboards increase flexibility for different user preferences and workflow situations



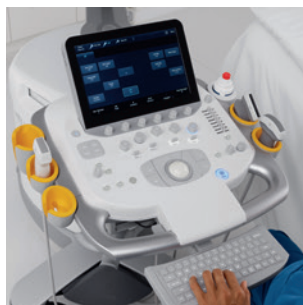
44%
fewer soft keys*

33%
fewer tactile keys*

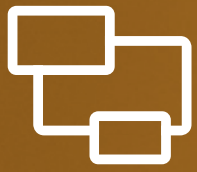
22%
fewer home-base keys*

Workflow Innovations

- Context-sensitive body markers feature intuitive pictograms, transducer markers and supportive protocols
- Smart-swap annotations with color-coded guidance simplify annotations by suggesting logical replacement text specific to the exam being performed
- eSieScan™ workflow protocols provide immediate access entry points through the touch display



*Data on file.

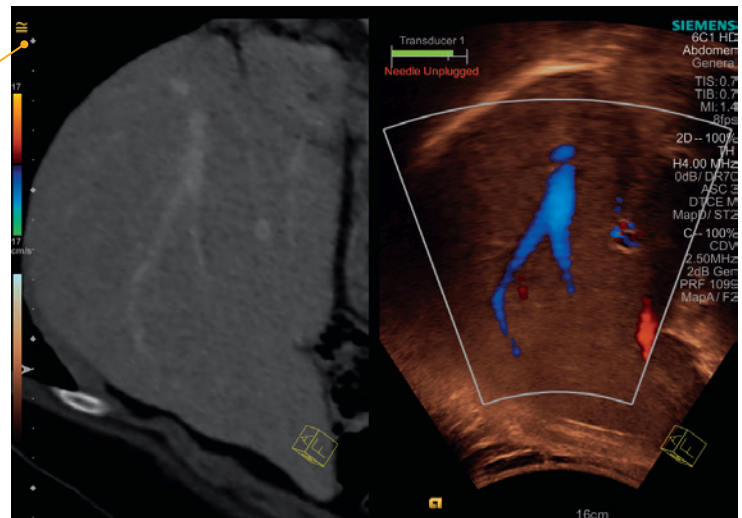


Imaging Performance

The Future of Imaging – Available to You.

Expand Clinical Insights with Multi-modality Imaging

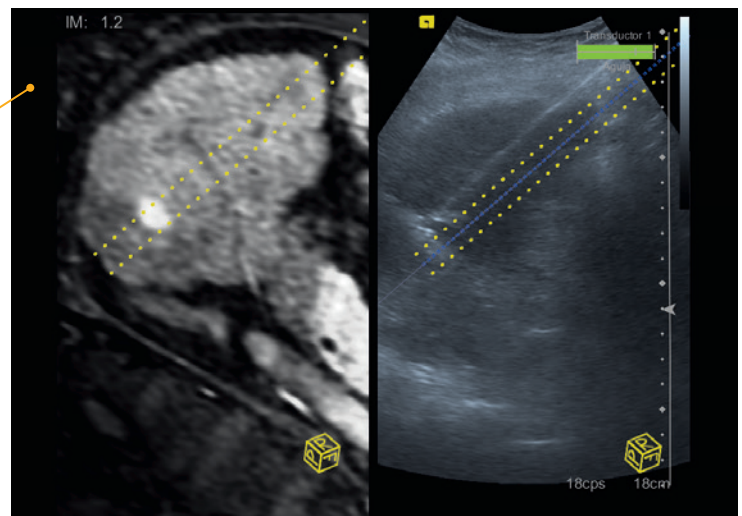
- 3D topography of CT and MR combined with real-time ultrasound
- Unparalleled depth of clinical and spatial information for interventional procedures and complex ultrasound analysis
- Smart initialization and auto-alignment to help reduce examination time and effort



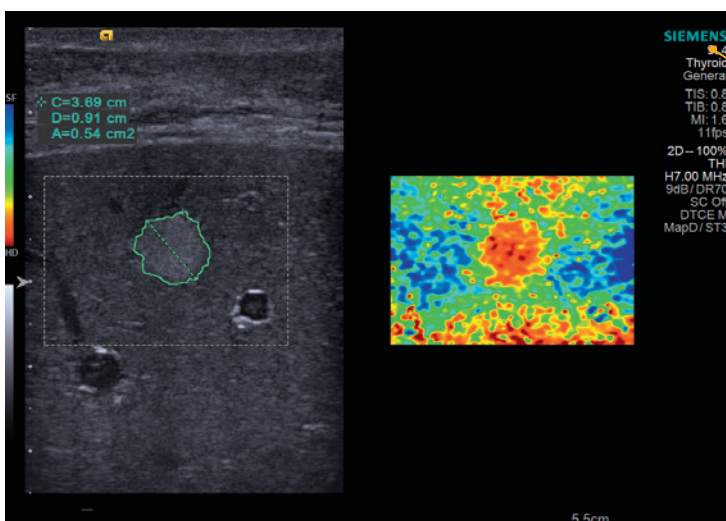
eSieFusion™ imaging of liver with color Doppler

Reduce Risk Associated with Biopsies and Ablation Procedures

- eSieGuide needle tracking allows clear needle visualization
- 3D markers help align lesion to needle orientation
- Reduce potential expenditures from complications



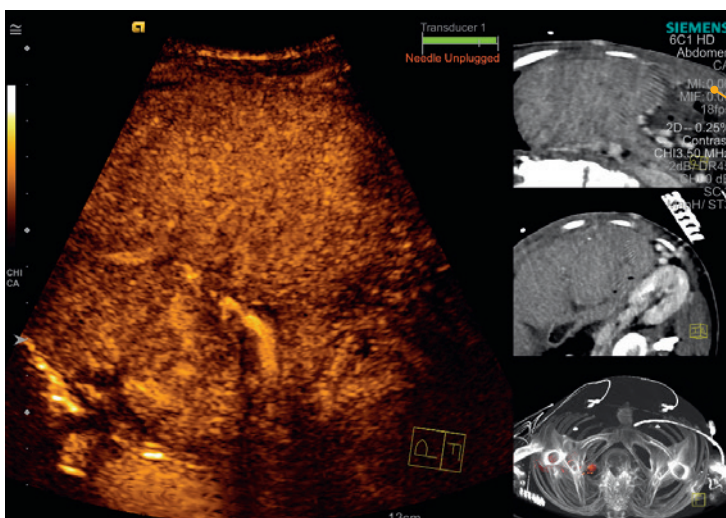
eSieFusion imaging and eSieGuide needle tracking of radio-frequency ablation of liver metastasis



VTIQ of liver mass measured with syngo® eSieCalcs™ native tracing software

Evaluate Tissue Stiffness with Shear Wave Elastography

- Based on Acoustic Radiation Force Impulse (ARFI) imaging, Siemens' unique Virtual Touch™ technologies provide a new dimension of ultrasound information
- Qualitative imaging or quantitative shear wave tissue measurements across multiple transducers and study types

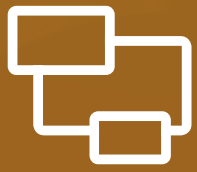


eSieFusion imaging with Cadence CHI of liver cirrhosis

Experience In-depth Anatomy Visualization with Contrast Enhanced Ultrasound* (CEUS)

- Designed for visualization of lesions in organs based upon vascularity and micro-bubble visualization
- Cadence™ Contrast Harmonic Imaging* (CHI) for the visualization of stunning detail
- Cadence™ Contrast Pulse Sequencing* (CPS) for penetrating clarity

* At the time of publication, the U.S. Food and Drug Administration has cleared ultrasound contrast agents only for use in LVO. Check the current regulation for the country in which you are using this system for contrast agent clearance.

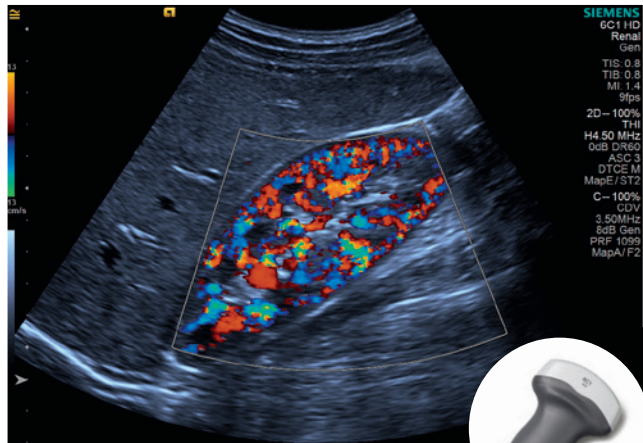


Imaging Performance

Beautiful Images – Acquired by You.

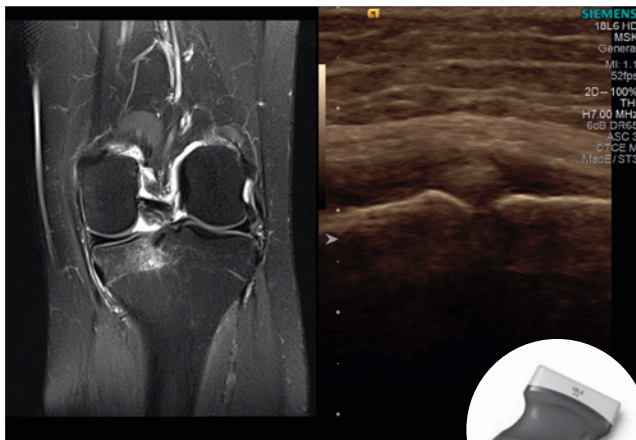
The unique signal processing algorithm of the SieStream™ HD architecture works to produce the highest signal fidelity. It optimizes signal integration between transducer and display by doubling the standard pixel density. The result: beautiful images that provide you with the highest diagnostic confidence.

6C1 HD Transducer



Liver and kidney with color Doppler

18L6 HD Transducer



Multi-modality review of lateral meniscus with MRI

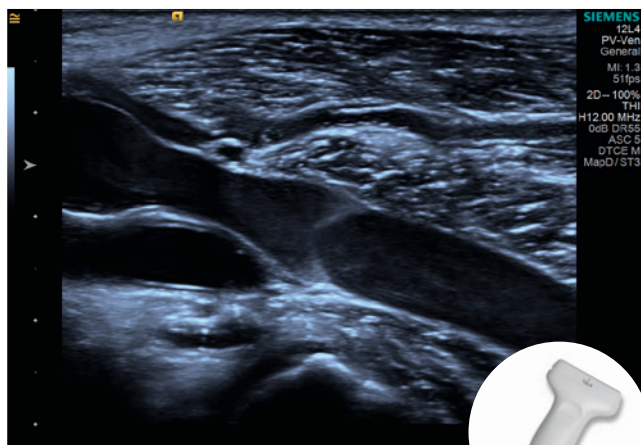
8C3 HD Transducer



Nuchal translucency thickness of 10-week fetus



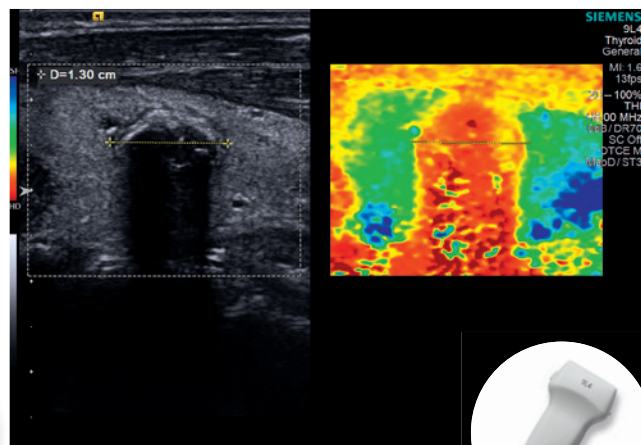
12L4 Transducer



Popliteal vein valve with spontaneous flow



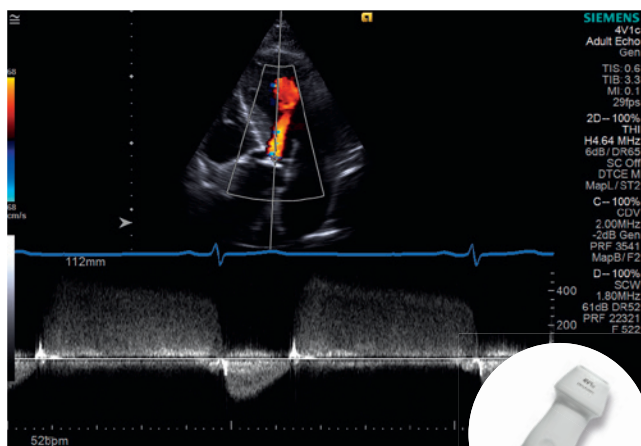
9L4 Transducer



Virtual Touch IQ of solid thyroid mass



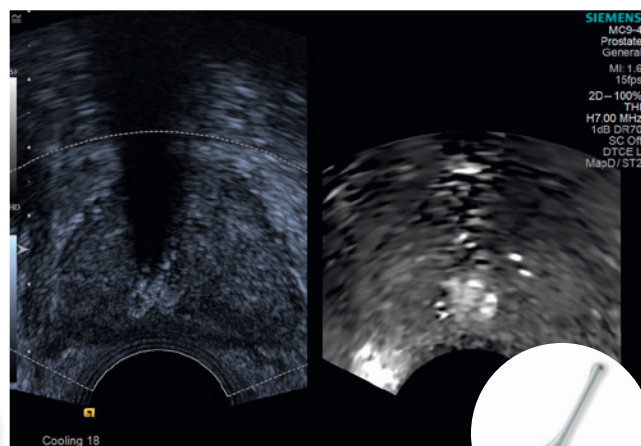
4V1c Access Transducer



Continuous wave Doppler demonstrating aortic regurgitation



MC9-4 Transducer



eSie Touch™ elasticity imaging of prostate mass





Investment Protection – Customizable for You.



The ACUSON S3000 system, HELX Evolution with Touch Control is designed to adapt to your standard of care. From usability to technical compliance standards, Siemens has worked to ensure that the system you invest in today will be up-to-date and ready to integrate the most advanced technologies for years to come. This allows you to manage your costs without compromising your quality of care.



Advanced Technologies Included

- Advanced SieClear™ spatial compounding
- Clarify™ vascular enhancement (VE) technology
- SieScape™ panoramic imaging
- eSiImage™ multiparametric optimization
- Multi-modality Review
- Data transfer to Nuance® Powerscribe 360
- Wireless DICOM reporting

Comprehensive Service Packages

- Siemens Performance Plans for optimal system performance
- ASCEND* Upgrades for maximum investment protection
- Ultrasound Evolve* Software Updates to enhance productivity
- Siemens Remote Service™ for fast diagnosis and software delivery
- Ultrasound System Security to deliver confidence and compliance

Microsoft® Windows® 7 Integration

- Improved network security and system stability
- Enhanced compatibility with electronic medical systems
- Scalable for the future

*Due to regulatory reasons, future availability cannot be guaranteed.

Standalone clinical images may have been cropped to better visualize pathology.

ACUSON S3000, Advanced SieClear, Cadence, Clarify, Elevate, eSieImage, eSieScan, HELX, SieClear, SieScape, SieStream and Virtual Touch are trademarks of Siemens Medical Solutions USA, Inc.

Siemens Remote Service and *syngo* are trademarks of Siemens AG.

Nuance PowerScribe 360 is a trademark of Nuance Communications.

Microsoft and Windows are trademarks of Microsoft Corporation.

QR Code is a registered trademark of DENSO WAVE INCORPORATED.

Read the QR
Code® with
the QR Code
reader in
your mobile!



Siemens Healthcare Headquarters

Siemens Healthcare GmbH
Henkestraße 127
91052 Erlangen
Germany
Phone: +49 9131 84-0
siemens.com/healthcare

Legal Manufacturer

Siemens Medical Solutions USA, Inc.
Ultrasound
685 East Middlefield Road
Mountain View, CA 94043
USA
Phone: +1-888-826-9702
siemens.com/ultrasound